



HARITHAM

ASTHAGIRI STREET @ KANCHIPURAM

★★★ HARITHAM ★★★

“Gopura darisanam kodi punniam, “**Haritham**” is located at the foot of Varadharaja Perumal @ Vishnu Kanchipuram which is in the heart of the city. It is also the place where affluent people are settling down because of the proximity to all the famous Ancient Temples in Temple city. Lot of NRIs are showing interest in settling down in Kanchipuram after their high profile career and hence demand for flats are huge in this locality.

AMENITIES



- ▶ Urai Kinaru for Pooja Water
- ▶ Gated community with modern amenities
- ▶ Designed by Professional Architects
- ▶ Security Room
- ▶ Branded Lift
- ▶ Vaastu compliant
- ▶ Covered Car Parking & 2 Wheeler Parking
- ▶ Three phase EB Supply with UPS provision
- ▶ Driver's Toilet
- ▶ Rain water harvesting
- ▶ Clear Title with Legal Opinion
- ▶ Best quality of Construction

**PROPOSED ELEVATION
FULL VIEW**

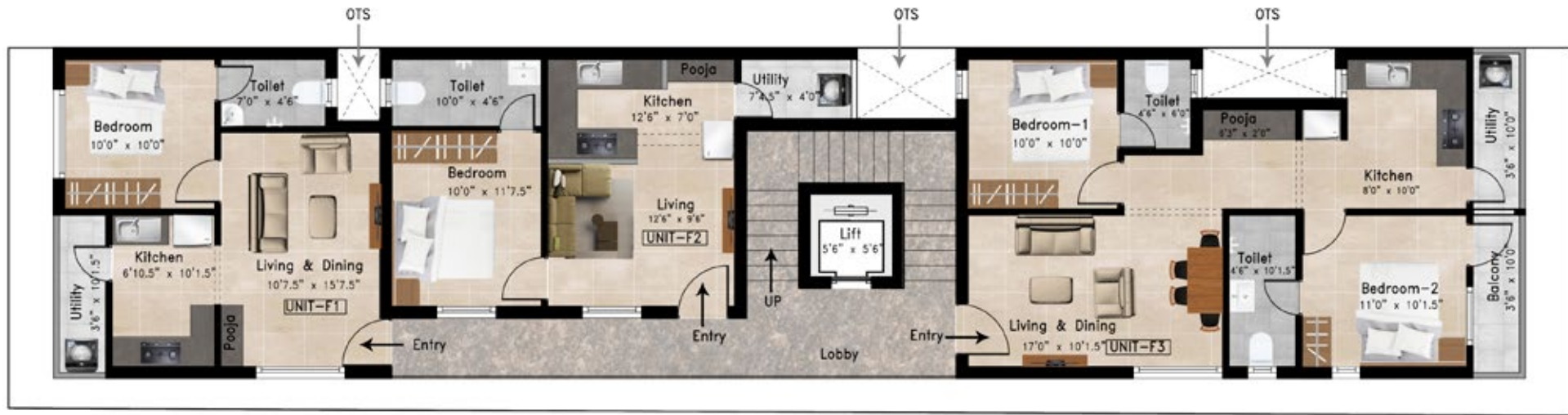




GROUND FLOOR PLAN

UNIT		SALEABLE AREA
G1	1BHK	660 Sq.ft
G2	1BHK	663 Sq.ft

LOCATION: Plot: No: 64,
Asthagiri Street (Bommakara Theru),
Chinna Kanchipuram.



TYPICAL FLOOR PLAN

UNIT		SALEABLE AREA
F1/S1	1BHK	660 Sq.ft
F2/S2	1BHK	663 Sq.ft
F3/S3	2BHK	1123 Sq.ft

LOCATION: Plot: No: 64,
Asthagiri Street (Bommakara Theru),
Chinna Kanchipuram.

SPECIFICATIONS

STRUCTURE

- ▶ RCC Framed structure with columns and beams
- ▶ Staircase and lift in stilt floor connects units in all levels
- ▶ 9" thick wall with well burnt chamber bricks in all peripheral walls and 4" thick for all partition walls.
- ▶ Inner and Outer walls plastered smoothly in the ratio 1:5
- ▶ Ceiling is plastered in the ratio 1:3
- ▶ Open loft in all bedrooms and kitchen
- ▶ Anti termite treatment

PAINTING

- ▶ All internal walls will be coated with 2 coats of Asian/ Equivalent brand premium emulsion paint over 2 coats of putty & 1 coat of primer
- ▶ External walls will be coated with weather proof APEX paint. Facade of the building will be as the architectural design
- ▶ Grills are painted with 2 coats of enamel paint over 1 coat of red oxide. Ceiling will be smoothly finished with 1 coat of primer and 2 coats of premium emulsion paint

FLOORING

- ▶ Living, Dining, Bedroom & Lobby 600mm x 600mm vitrified tile of khajaria/asian brand or equivalent
- ▶ Kitchen Anti-Stain tiles of size 600mm x 600mm flooring. 300mm x 450mm tiles for wall area upto 600mm height above the counter top
- ▶ Toilets Anti-Skid ceramic tiles for flooring and anti-stain tiles of khajaria/asian brand or equivalent upto 8" ft level.
- ▶ Balcony & Utility Anti-Skid ceramic tiles.
- ▶ All flooring areas skirting 4" height
- ▶ Terrace flooring with heat Reflective Tiles

JOINERIES

- ▶ Main Door Well-seasoned teak wood frame with a moulded skin door in enamel paint
- ▶ Bedroom Door and Balcony Door Well-seasoned hardwood frame with a moulded skin door in enamel paint.
- ▶ Toilet and Utility Door Well-seasoned hardwood frame with water proof flush doors. Windows Unplasticized Poly Vinyl Chloride (UPVC) casement windows, with 4mm thick glass, architecturally designed MS grills.
- ▶ Ventilators UPVC ventilators with 4mm thick glass louvers at 4 c/c.

PLUMBING & SANITARY FITTINGS

- ▶ Toilets Jaquar or equivalent floor mounted EWC includes seat cover, attached/detached flush tank with health faucet. JAQUAR/equivalent CP fittings will be provided in all bathrooms.
- ▶ Kitchen counter top with polished black granite provided with NIRALI/equivalent single bowl SS sink including drain board.
- ▶ Utility Water outlet provision for washing machine and JAQUAR/equivalent long body pillar cock.

COMMON AREA SPECIFICATIONS

- ▶ Staircase steps with Granite Flooring
- ▶ Staircase stainless steel handrail
- ▶ Compound wall with Security Gate
- ▶ Rain Water Harvesting
- ▶ Security Room and Driver's Toilet
- ▶ OHT inner area with tiles finish for easy cleaning Sump



ELECTRIFICATION

Three-phase supply with automatic change over switch in each apartment. Following points will be provided:

- ▶ Living/Dinning Light point - 4, Fan point - 2, 5A plug point - 3, 15A plug point - 1, TV point - 1, Telephone point -1, AC Socket - 1
- ▶ Bedroom - Light point - 2, Fan point - 1, 6A plug point - 1, 16A plug point - 1, TV point - 1, 6A 2 Way point -2, AC Socket - 1
- ▶ Kitchen - Light point - 1, 6A plug point - 2, 16A plug point - 3, Exhaust fan point - 1
- ▶ Toilet - Light point - 2, 6A plug point - 1, 16A plug point - 1 ▶ Balcony Light point - 1
- ▶ Service - Light point - 1, 16A plug point - 1 ▶ Concealed copper wiring in conduits
- ▶ Aesthetic Anchor - modular switches ▶ Inverter provision

ONGOING PROJECTS

**territory**
PADUR

**Gokulam**
Villas

**LAHANA**
@ MADURAVOYAL

**HARITHAM**
@ KOLATHUR

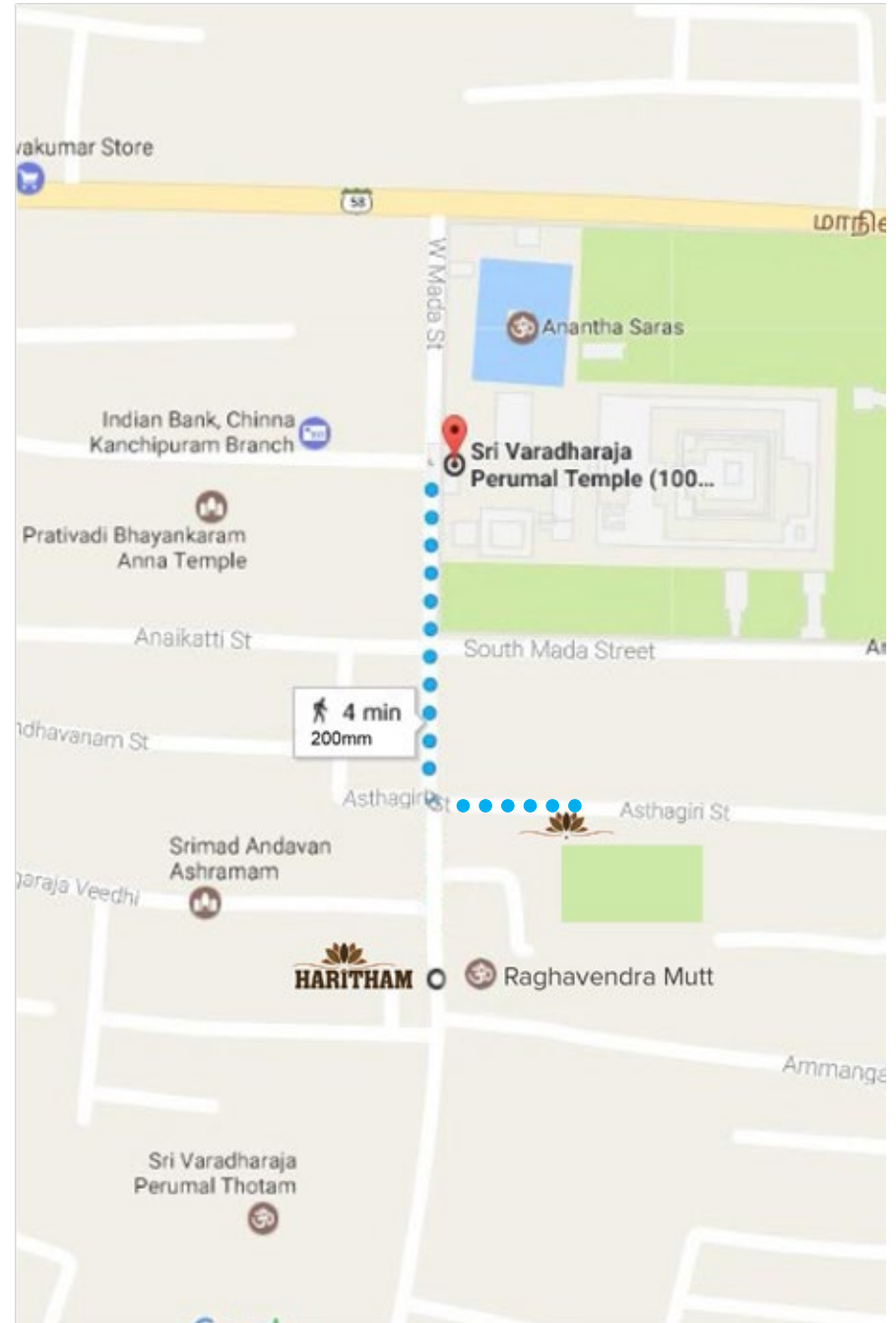
HARITHAM CONSTRUCTIONS

Guna Towers, First Floor,
No.2, North Boag Road,
T.Nagar, Chennai - 600017, India

+91 91762 11555

swaminathan@propshell.com
www.propshell.com

**HARITHAM**



*This brochure is conceptual in nature and is by no means a legal offering. The promoters have the rights to change, alter, delete or add any specification mentioned herein without notice.